

The particle analysis software PASWin can be used together with different particle spectrometers and particle counters for analysis of particle size distributions in aerosols and suspensions.

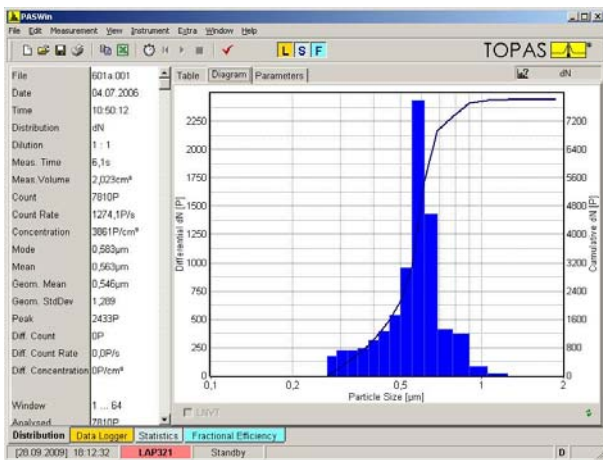
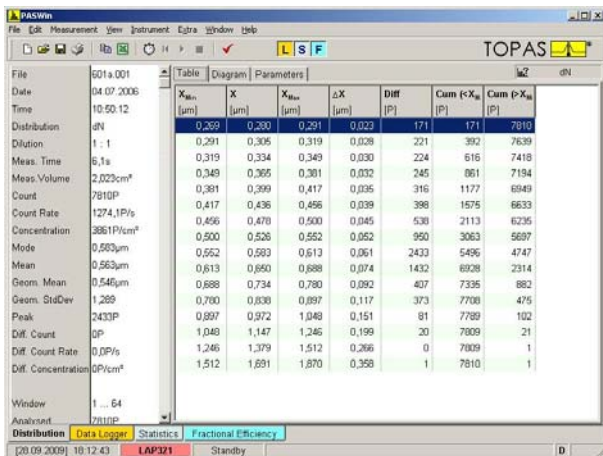


Diagram view of a measured particle size distribution

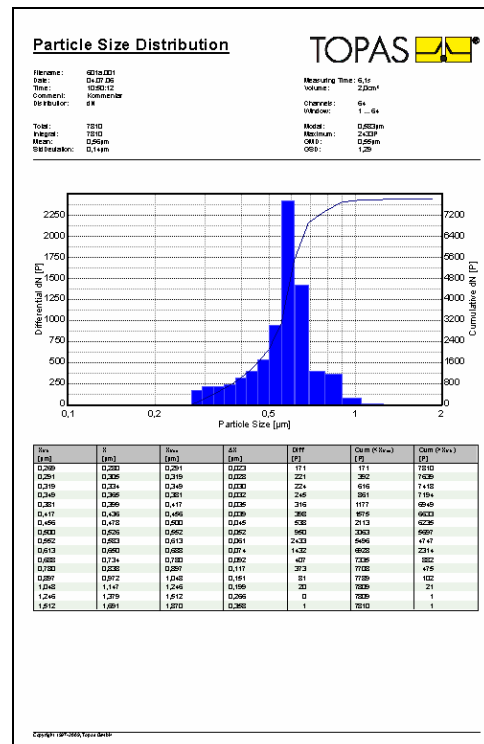


Tabular view of a measured particle size distribution

Based on calculation methods that use the contents of channel histograms particle size distributions are determined including all important statistical distribution parameters. Resulting data are presented in graphs and tables on screen or printer and stored as ASCII files.

Feature particle size distribution analysis and result presentation

- Particle size distribution as density or cumulative function: weighted by total number, surface area or volume in the whole measuring range or in a selected range with variable channel resolution (1...128 channels)
- Graphical presentation with selectable linear or logarithmic axis resolution
- Integral distribution parameters: Mean arithmetic and geometric diameter with standard deviation, modal value and X_{10} , X_{16} , X_{50} , X_{84} , X_{90} values of the cumulative function, Sauter-diameter d_{ST} , volume specific surface A_O/V , distribution moments $M_{1;0}$, $M_{2;0}$, $M_{3;0}$
- Log-Normal distribution (LNVT)
- Calculation of number and mass concentrations per cm^3 , litre, cf or m^3
- Distribution vs. Channel number (calibration)



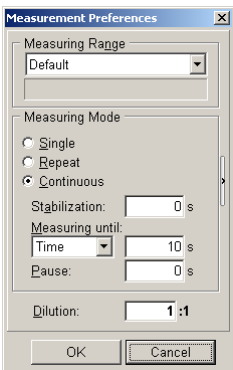
Protocol printout with user defined logo

Features and Functions

Feature measuring procedure setup

The run of the measuring procedure can be configured flexibly as follows:

- Single-/repeated measurement, continuous measurement
- Test stopped after a defined duration, volume or particle number
- Time intervals for pause and stabilization
- Multi-language menu (english, german, french)
- Comprehensive documentation by the manual



Setup of the measuring procedure

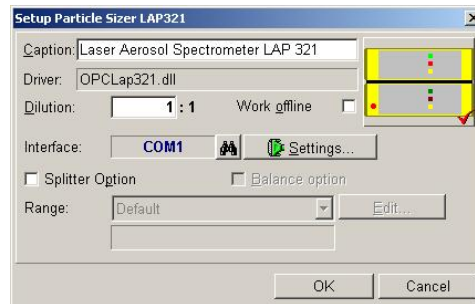
Feature particle counter control

The software can be used together with Topas particle spectrometers and particle counters. Also instruments of different manufacturers are supported by this software.

- Device control of different particle counters by using dynamic link libraries (DLL-concept)
- Customised integration with an existing applicable interface



Choice of a particle counter

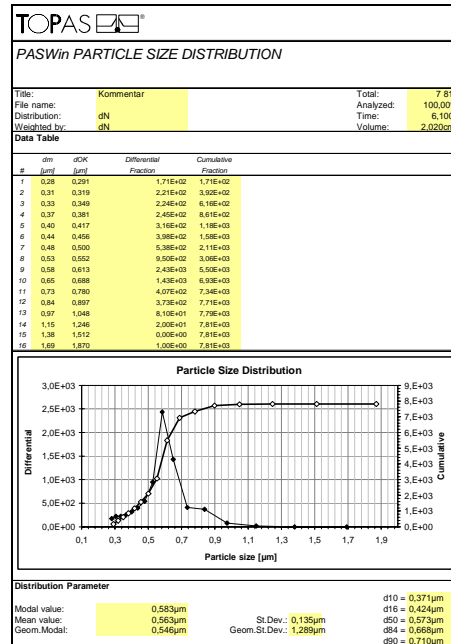


Configuration of the chosen particle spectrometer

- Comprehensive and user editable device calibration

Feature measuring data management

Measuring data are presented as a tabular or graphical printout. Furthermore a copy&paste function can be used together with the windows clipboard. A dynamic data exchange (DDE) is also implemented in order to export measuring data for further processing to a special Excel-spreadsheet.

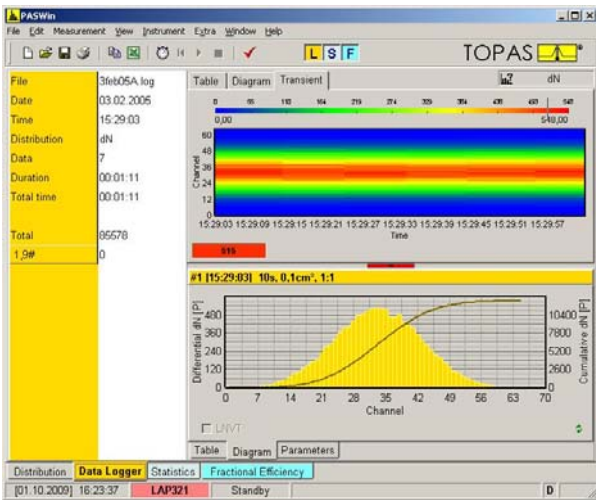


DDE-Excel-Export of measuring data

Features and Functions

Data Logger Function

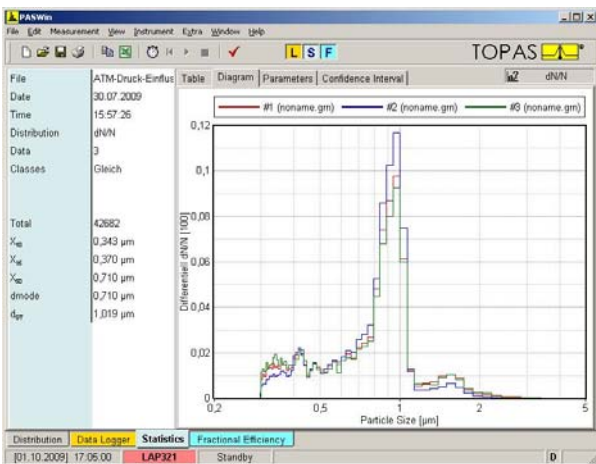
Measuring data can be recorded and reported continuously with a variable time resolution by the implemented data logger.



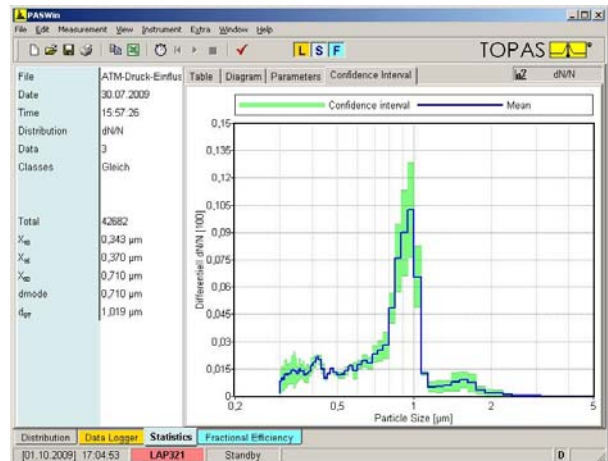
Transient diagram and particle size distribution

Statistics Function

Presentation of several measured particle size distributions within one diagram. Indication of an average distribution for repeated measurements including the confidence interval.

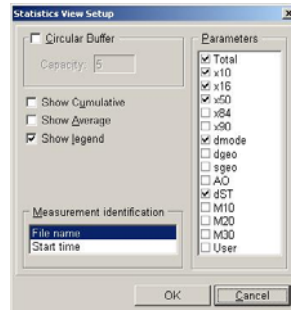


Particle size distributions from repeated measurements



Average particle size distribution indicating the confidence interval

Additionally different statistical distribution parameters can be chosen for documentation.

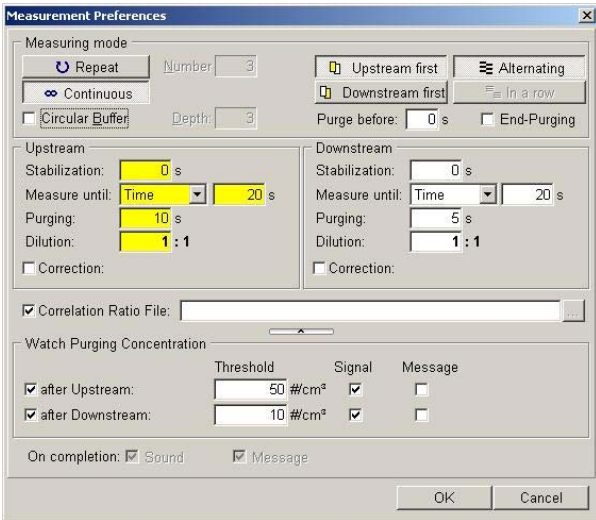


Choice of statistical distribution parameters

Fractional Efficiency Measurements

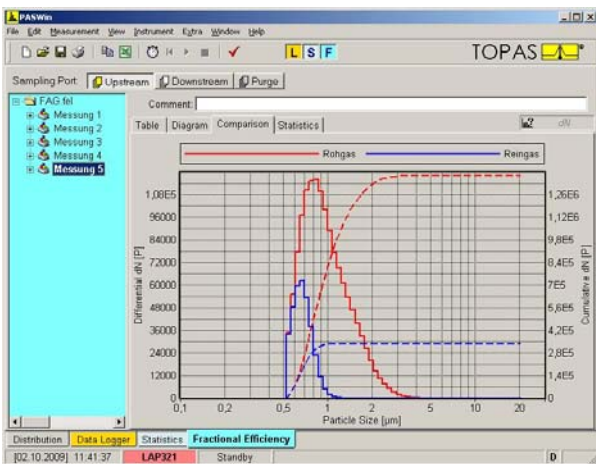
- Special module for filter performance testing including statistical evaluation of the confidence interval (optional)
- Control of a sample switching unit (SYS 520) for alternating upstream and downstream particle measurements
- Measurement of upstream and downstream particle size distributions
- User defined configuration of the test procedure (repeated or alternating measurements, measurement duration, start/stop/stabilisation intervals, circular buffer)

Features and Functions

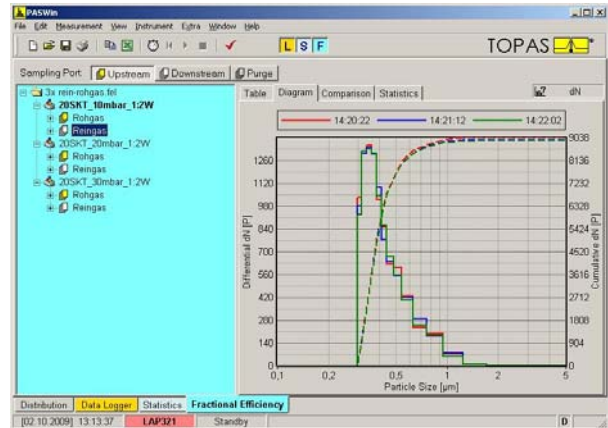


Setup of the test procedure for fractional efficiency measurements

- Combined or separated illustration of measured particle size distributions
- Choice of a distribution by a data tree structure

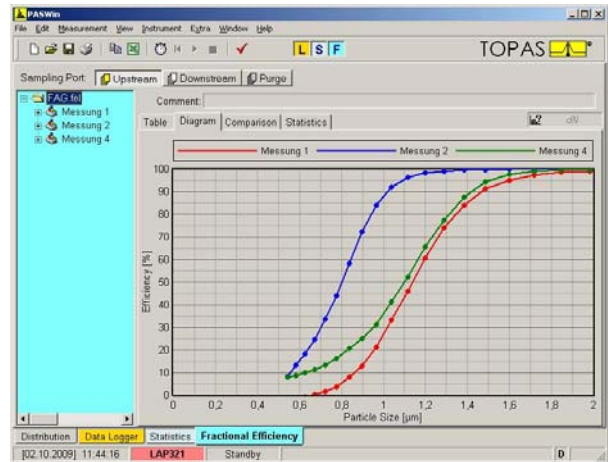


Upstream and downstream particle size distribution at fractional efficiency measurements



Repeated downstream particle size distributions

- Calculation of fractional efficiency curves from averaged upstream and downstream particle size distributions



Fractional efficiency curves for 3 measurements

QMS certified to DIN EN ISO 9001.



12 100 11908 TMS

For more information please visit our website at www.topas-gmbh.de

Specifications are subject to change without notice.

© Copyright 2009 Topas GmbH.